

NATIONAL PRODUCT AND RELATED AGGREGATES

The tables presented in this section give the estimates of Gross, Net National Product at factor cost, at current and constant (1999-2000) prices.

Tables 2.1 and 2.2

The estimates of Gross, Net National Product at current and at 1999-2000 prices are shown.

Tables 2.3 and 2.4

The estimates of Net Domestic Product at factor cost by industry of origin at current and at 1999-2000 prices are given.

Tables 2.5 and 2.6

The estimates of Private Final Consumption Expenditure in the domestic market at current and at 1999-2000 prices are shown.

Table 2.7

The table presents estimates of domestic saving by household sector, private corporate sector and public sector at current prices.

Tables 2.8 and 2.9

The tables present estimates of capital formation by type of assets and by type of institutions at current prices and at 1999-2000 prices respectively. These estimates are prepared by the commodity flow approach separately for construction, machinery & equipment and changes in stocks.

Tables 2.10

The table presents the estimation of (i) Gross Domestic Product, (ii) Gross Domestic Saving (iii) Gross Domestic Capital Formation, and (iv) Final Consumption Expenditure at current prices and also indicate the percentage share of public sector in each of the aggregates.

NATIONAL PRODUCT AND RELATED AGGREGATES

**Table 2.1- NATIONAL PRODUCT AT FACTOR COST
(at current prices)**

Item	1999-00	2002-03	2003-04	2004-05	2005-06(P)	2006-07*
1	2	3	4	5	6	7
Gross National Product (GNP) (Rs. Ten million)	1771094	2244725	2519921	2855331	3249554	3760285
Net National Product (NNP) (Rs. Ten million)	1589672	1994248	2239939	2526408	2870750	3325817
Estimated Population (Million)	1001	1056	1072	1089	1106	1122
Per Capita Net National Product (Rupees)	15881	18885	20895	23199	25956	29642
Index Number(1999-00=100)						
GNP	100	126.7	142.3	161.2	183.5	212.3
NNP	100	125.5	140.9	158.9	180.6	209.2
Per Capita NNP	100	118.9	131.6	146.1	163.4	186.7

Source : Central Statistical Organisation

P-Provisional

* : Quick estimates

**Table 2.2- NATIONAL PRODUCT AT FACTOR COST
(at 1999-00 prices)**

Item	1999-00	2002-03	2003-04	2004-05	2005-06(P)	2006-07*
1	2	3	4	5	6	7
Gross National Product (GNP) (Rs. Ten million)	1771094	2029482	2204913	2366886	2593160	2845155
Net National Product (NNP) (Rs. Ten million)	1589672	1805830	1963544	2104520	2306894	2530494
Estimated Population (Million)	1001	1056	1072	1089	1106	1122
Per Capita Net National Product (Rupees)	15881	17101	18317	19325	20858	22553
Index Number(1999-00=100)						
GNP	100.0	114.6	124.5	133.6	146.4	160.6
NNP	100.0	113.6	123.5	132.4	145.1	159.2
Per Capita NNP	100.0	107.7	115.3	121.7	131.3	142.0

Source : Central Statistical Organisation

P-Provisional

* : Quick estimates

NATIONAL PRODUCT AND RELATED AGGREGATES

Table 2.3 - NET DOMESTIC PRODUCT BY ECONOMIC ACTIVITY
(at current prices)

(Rs.Ten million)

Industry	1999-00	2002-03	2003-04	2004-05	2005-06(P)	2006-07*
1	2	3	4	5	6	7
1. Agriculture, forestry and fishing	424952	443638	501318	517161	576609	651826
1.1 Agriculture	390591	401295	456831	471880	524366	598222
1.2 Forestry & logging	17286	20295	21559	22447	24864	25805
1.3 Fishing	17075	22048	22928	22834	27379	27799
2. Mining & quarrying	33001	52471	52834	71951	79469	85461
3. Manufacturing	207186	267772	301021	349822	396403	471977
3.1 Registered	129469	176005	199411	235779	269354	321410
3.2 Unregistered	77717	91767	101610	114043	127049	150567
4. Electricity, gas and water supply	24217	28158	27833	27225	27838	30059
5. Construction	99367	130919	151808	206742	257324	310810
6. Trade, hotels and restaurant	248337	339371	386214	450399	525997	615807
6.1 Trade	227746	311454	354947	412728	480425	560216
6.2 Hotels & restaurants	20591	27916	31267	37671	45572	55591
7. Transport, storage and communication	107913	143550	169807	198235	224840	261420
7.1 Railways	16409	19312	20617	21968	25206	30300
7.2 Transport by other means	68120	93524	111668	130954	146253	165462
7.3 Storage	1336	1572	1685	2002	2095	2333
7.4 Communication	22048	29142	35837	43311	51286	63325
8. Financing, insurance, real estate and business services	213443	297271	332740	358101	398210	464497
8.1 Banking & insurance	102640	140688	157517	162824	174978	207264
8.2 Real estate, ownership of dwellings and business services	110803	156583	175223	195277	223232	257233
9. Community, social & personal services	246688	307788	334613	369147	410176	463738
9.1 Public administration and defence	107036	127819	135688	150589	169305	190135
9.2 Other services	139652	179969	198925	218558	240871	273603
10. Total net domestic product at factor cost	1605103	2010938	2258189	2548783	2896866	3355595

Source : Central Statistical Organisation

P-Provisional

*: Quick estimates

NATIONAL PRODUCT AND RELATED AGGREGATES

Table 2.4 - NET DOMESTIC PRODUCT BY ECONOMIC ACTIVITY
(at 1999-2000 prices)

(Rs. Ten million)

Industry	1999-00	2002-03	2003-04	2004-05	2005-06(P)	2006-07*
1	2	3	4	5	6	7
1. Agriculture, forestry and fishing	424952	413072	455329	453582	480469	497759
1.1 Agriculture	390591	376116	418264	417032	442683	459237
1.2 Forestry & logging	17286	18401	18148	18535	18875	19211
1.3 Fishing	17075	18556	18917	18015	18911	19311
2. Mining & quarrying	33001	38036	39114	42385	44122	46463
3. Manufacturing	207186	242017	257105	278099	300438	335189
3.1 Registered	129469	156581	167711	182834	197682	220440
3.2 Unregistered	77717	85436	89394	95265	102756	114749
4. Electricity, gas and water supply	24217	24952	25899	28708	29805	31619
5. Construction	99367	117828	131824	153197	178505	199792
6. Trade, hotels and restaurant	248337	306139	336883	362411	396623	430112
6.1 Trade	227746	281058	309623	332015	361952	390609
6.2 Hotels & restaurants	20591	25081	27260	30396	34671	39503
7. Transport, storage and communication	107913	151662	177063	206875	240044	283735
7.1 Railways	16409	19939	21284	23079	25544	28059
7.2 Transport by other means	68120	82435	92204	103346	111737	122603
7.3 Storage	1336	1311	1375	1571	1587	1628
7.4 Communication	22048	47977	62200	78879	101176	131445
8. Financing, insurance, real estate and business services	213443	252490	264902	287576	321109	367436
8.1 Banking & insurance	102640	122176	124798	135901	155648	186925
8.2 Real estate, ownership of dwellings & business services	110803	130314	140104	151675	165461	180511
9. Community, social & personal services	246688	278439	293270	313185	335466	357543
9.1 Public administration and defence	107036	113516	116171	124017	133540	140555
9.2 Other services	139652	164923	177099	189168	201926	216988
10. Total net domestic product at factor cost	1605103	1824637	1981389	2126018	2326582	2549648

Source : Central Statistical Organisation

P-Provisional

* : Quick estimates

NATIONAL PRODUCT AND RELATED AGGREGATES

Table 2.5 - PRIVATE FINAL CONSUMPTION EXPENDITURE IN DOMESTIC MARKET
(at current prices)

(Rs. Ten million)

Item	1999-00	2002-03	2003-04	2004-05	2005-06(P)	2006-07*
1	2	3	4	5	6	7
1. Food, beverages & tobacco	647011	690311	742558	778504	874010	992348
1.1 Food	570005	601885	649176	672624	748209	846495
1.1.1 Cereals & bread	169986	163870	174203	165739	179525	209957
1.1.2 Pulses	18845	17877	22110	20149	23495	31034
1.1.3 Sugar & gur	36986	30332	28226	32548	46450	57723
1.1.4 Oils & oilseeds	30518	27347	44301	47662	42118	39685
1.1.5 Fruits & vegetables	113535	137767	146722	152015	178796	199141
1.1.6 Potato & other tubers	10536	13379	12212	16450	20162	24780
1.1.7 Milk & milk products	103681	113960	120220	131850	140913	153263
1.1.8 Meat, egg & fish	50649	63195	65503	69305	78446	84422
1.1.9 Coffee, tea & cocoa	9214	7264	6601	7932	8347	8510
1.1.10 Spices & other food	26055	26894	29078	28974	29957	37980
1.2 Beverages, pan & intoxicants	19676	28583	31051	33927	37664	41889
1.3 Tobacco & its products	34395	28707	27511	30457	38666	44067
1.4 Hotels & restaurants	22935	31136	34820	41496	49471	59897
2. Clothing & footwear	66292	79857	86430	92362	97913	103597
2.1 Clothing	57936	71766	77643	82241	87459	93586
2.2 Footwear	8356	8091	8787	10121	10454	10011
3. Gross rent, fuel & power	143558	197896	213526	239175	260723	278492
3.1 Gross rent & water charges	99270	131674	141774	161041	175325	188764
3.2 Fuel & power	44288	66222	71752	78134	85398	89728
4. Furniture, furnishing & household equipment etc.	40939	51831	57372	66410	76496	90887
4.1 Furniture, furnishing & repair	32699	40777	45099	52817	61367	73564
4.2 Services	8240	11054	12273	13593	15129	17323
5. Medical care & health services	54825	81141	85997	91094	96559	102422
6. Transport & communication	164524	238561	275076	310969	355948	407766
6.1 Personal transport equipment	9178	11708	13340	14737	17483	19916
6.2 Operation of personal transport equipment	47081	67207	82187	94380	109117	124108
6.3 Purchase of transport services	93727	137524	152680	166749	183873	202087
6.4 Communication	14538	22122	26869	35103	45475	61655
7. Recreation, education & cultural services	42779	57641	65771	75296	85446	97991
7.1 Education	23781	34014	38274	43040	48485	55145
7.2 Others	18998	23627	27497	32256	36961	42846
8. Misc. goods & services	97613	155380	176817	194680	215127	250606
9. Private final consumption expenditure in domestic market	1257541	1552618	1703547	1848490	2062222	2324109

Source : Central Statistical Organisation

P-Provisional

* : Quick estimates

NATIONAL PRODUCT AND RELATED AGGREGATES

Table 2.6 - PRIVATE FINAL CONSUMPTION EXPENDITURE IN DOMESTIC MARKET
(at 1999-2000 prices)

(Rs. Ten million)

Item	1999-00	2002-03	2003-04	2004-05	2005-06(P)	2006-07*
1	2	3	4	5	6	7
1. Food, beverages & tobacco	647011	649255	678422	685475	737207	772509
1.1 Food	570005	566403	589607	591733	631006	656294
1.1.1 Cereals & bread	169986	172971	179452	168538	176562	181647
1.1.2 Pulses	18845	16405	20719	18792	19176	20139
1.1.3 Sugar & gur	36986	31507	29532	29246	37855	46770
1.1.4 Oils & oilseeds	30518	24460	34224	38261	34676	30459
1.1.5 Fruits & vegetables	113535	115000	114216	115311	128781	136342
1.1.6 Potato & other tubers	10536	9977	10060	10553	10800	11597
1.1.7 Milk & milk products	103681	97965	100821	105989	112821	115416
1.1.8 Meat, egg & fish	50649	58278	59862	61322	63909	65777
1.1.9 Coffee, tea & cocoa	9214	10132	9893	11282	11901	11719
1.1.10 Spices & other food	26055	29708	30828	32439	34525	36428
1.2 Beverages, pan & intoxicants	19676	30579	35695	36815	39344	41409
1.3 Tobacco & its products	34395	24378	22881	23780	29331	32191
1.4 Hotels & restaurants	22935	27895	30239	33147	37526	42615
2. Clothing & footwear	66292	78581	76682	80295	89903	93257
2.1 Clothing	57936	69015	67462	70261	80225	83594
2.2 Footwear	8356	9566	9220	10034	9678	9663
3. Gross rent, fuel & power	143558	155900	161109	172987	178261	183645
3.1 Gross rent & water charges	99270	107358	110200	119276	122554	125927
3.2 Fuel & power	44288	48542	50909	53711	55707	57718
4. Furniture, furnishing & household equipment etc.	40939	47260	51077	57323	63953	72580
4.1 Furniture, furnishing & repair	32699	37177	40288	45785	51615	59389
4.2 Services	8240	10083	10789	11538	12338	13191
5. Medical care & health services	54825	73559	76021	78597	80132	80714
6. Transport & communication	164524	221496	246785	271835	300206	336923
6.1 Personal transport equipment	9178	10783	12246	12881	14791	16579
6.2 Operation of personal transport equipment	47081	59500	67435	71164	73774	76630
6.3 Purchase of transport services	93727	119408	127556	134755	142399	151612
6.4 Communication	14538	31805	39548	53035	69242	92102
7. Recreation, education & cultural services	42779	53581	60036	68369	76866	89044
7.1 Education	23781	31398	34522	37939	41786	48052
7.2 Others	18998	22183	25514	30430	35080	40992
8. Misc. goods & services	97613	133962	146734	164866	184211	205001
9. Private final consumption expenditure in domestic market	1257541	1413594	1496866	1579747	1710739	1833673

Source : Central Statistical Organisation

P-Provisional

* : Quick estimates

NATIONAL PRODUCT AND RELATED AGGREGATES

Table 2.7 - DOMESTIC SAVING BY TYPE OF INSTITUTIONS
(at current prices)

(Rs.Ten million)

Item	1999-00	2002-03	2003-04	2004-05	2005-06(P)	2006-07*
1	2	3	4	5	6	7
1 Gross domestic saving	484256	647970	821027	1000424	1227348	1441423
1.1 Household sector	412516	569134	670776	725110	866756	985822
1.1.1 Financial saving	206602	253255	313260	318264	420841	467985
1.1.2 Saving in physical assets	205914	315879	357516	406846	445915	517837
1.2.Private corporate sector	87234	94772	120730	206363	268329	322242
1.2.1 Joint stock companies \$	78114	86845	111807	195910	256148	309222
1.2.2 Co-operative banks & societies ++	9120	7927	8923	10453	12181	13020
1.3.Public sector	-15494	-15936	29521	68951	92263	133359
1.3.1 Public authorities	-73967	-115273	-85536	-64560	-49878	-31165
1.3.1.1 Government administration \$\$	-99507	-128509	-99950	-80810	-68610	-55811
1.3.1.2 Departmental enterprises	25540	13236	14414	16250	18732	24646
1.3.2 Non-departmental enterprises	58473	99337	115057	133511	142141	164524
2.Less consumption of fixed capital **	181421	250477	279980	328923	378804	434467
2.1 Household sector	61522	92113	105794	127795	148020	168935
2.2 Private corporate sector	46198	68738	77428	92326	110683	134588
2.3 Public sector	73701	89626	96758	108802	120101	130944
3.Net domestic saving	302835	397493	541047	671501	848544	1006956
3.1 Household sector	350994	477021	564982	597315	718736	816887
3.2 Private corporate sector	41036	26034	43302	114037	157646	187654
3.3 Public sector	-89195	-105562	-67237	-39851	-27838	2415
4. Net capital inflow ***	21988	-28486	-45380	13338	44604	46362
5. Finance for gross capital formation (1+4)	506244	619484	775647	1013762	1271952	1487785

Source : Central Statistical Organisation

P- provisional estimates

* quick estimates

** Estimated from the value of fixed capital stock and expected age of various types of assets and differs from the provisions for depreciation as per books of accounts.

*** Net capital inflow from abroad is the deficit of the nation on current account in the Balance of Payment Accounts excluding official transfer payments.

++ Includes quasi corporate bodies

\$ Excluding reinvested earnings of foreign companies

\$\$ Includes public services in quasi-government bodies

NATIONAL PRODUCT AND RELATED AGGREGATES

Table 2.8 - CAPITAL FORMATION BY TYPE OF ASSETS AND BY TYPE OF INSTITUTIONS
(at current prices)

(Rs. Ten million)

Item	1999-00	2002-03	2003-04	2004-05	2005-06(P)	2006-07*
1	2	3	4	5	6	7
1. Gross capital formation(gcf)	509518	619490	737472	995943	1236800	1492313
1.1 Public sector	144610	149399	174579	216962	272002	321753
1.2 Private corporate sector	143475	140255	180804	331081	477490	603014
1.3 Household sector	205914	315879	357517	406846	445916	517837
1.4 Valuables+	15519	13957	24572	41054	41392	49709
2. Gross fixed capital formation	456416	584242	687016	894674	1109160	1346501
2.1 Public sector	129286	154213	177736	201912	251507	308603
2.1.1 Construction	80658	106492	120046	134120	172449	214195
2.1.2 Machinery and equipment	48628	47721	57690	67792	79058	94408
2.2 Private corporate sector	127412	128768	164975	291143	419647	529871
2.2.1 Construction	19907	28867	40238	65925	126903	143476
2.2.2 Machinery and equipment	107505	99901	124737	225218	292744	386395
2.3 Household sector	199718	301261	344305	401619	438006	508027
2.3.1 Construction	126443	172210	200825	274276	304467	373589
2.3.2 Machinery and equipment	73275	129051	143480	127343	133539	134438
3. Change in stocks	37583	21291	25884	60215	86248	96103
3.1 Public sector	15324	-4814	-3157	15050	20495	13150
3.2 Private corporate sector	16063	11487	15829	39938	57843	73143
3.3 Household sector	6196	14618	13212	5227	7910	9810
4. Valuables+	15519	13957	24572	41054	41392	49709
5. less: Consumption of fixed capital	181421	250477	279980	328923	378804	434467
5.1 Public sector	73701	89626	96758	108802	120101	130944
5.2 Private corporate sector	46198	68738	77428	92326	110683	134588
5.3 Household sector	61522	92113	105794	127795	148020	168935
6. net capital formation (ncf)	328097	369013	457492	667020	857996	1057846
6.1 Public sector	70909	59773	77821	108160	151901	190809
6.2 Private corporate sector	97277	71517	103376	238755	366807	468426
6.3 Household sector	144392	223766	251723	279051	297896	348902
6.4 valuables+	15519	13957	24572	41054	41392	49709
7. Errors & omissions	-3274	-5	38175	17818	35153	-4527
8. Net capital formation adjusted for errors and omissions	324823	369008	495667	684838	893149	1053319
9. Gross capital formation adjusted for errors and omissions	506244	619485	775647	1013761	1271953	1487786

Source : Central Statistical Organisation

+ Excluding works of art & antiques

P-Provisional

* : Quick estimates

NATIONAL PRODUCT AND RELATED AGGREGATES

Table 2.9 - CAPITAL FORMATION BY TYPE OF ASSETS AND BY TYPE OF INSTITUTIONS
(at 1999-2000 prices)

(Rs.Ten million)

Item	1999-00	2002-03	2003-04	2004-05	2005-06(P)	2006-07*
1	2	3	4	5	6	7
1. Gross capital formation(gcf)	509518	555291	632621	781583	923828	1056532
1.1 Public sector	144610	134468	145578	166989	202884	227308
1.2 Private corporate sector	143475	126124	156736	268172	364854	439419
1.3 Household sector	205914	281769	308766	312549	322950	351714
1.4 Valuables +	15519	12930	21541	33873	33140	38091
2. Gross fixed capital formation	456416	522592	593964	705945	828986	954350
2.1 Public sector	129286	138263	153247	161237	190987	223379
2.1.1 Construction	80658	96517	104427	108035	132711	155830
2.1.2 Machinery and equipment	48628	41746	48820	53202	58276	67549
2.2 Private corporate sector	127412	115588	143298	236918	321443	387284
2.2.1 Construction	19907	26006	33227	48510	87701	92327
2.2.2 Machinery and equipment	107505	89582	110071	188408	233742	294957
2.3 Household sector	199718	268741	297419	307790	316556	343687
2.3.1 Construction	126443	152698	170221	200759	209316	240434
2.3.2 Machinery and equipment	73275	116043	127198	107031	107240	103253
3. Change in stocks	37583	19769	17116	41765	61702	64091
3.1 Public sector	15324	-3795	-7669	5752	11897	3929
3.2 Private corporate sector	16063	10536	13438	31254	43411	52135
3.3 Household sector	6196	13028	11347	4759	6394	8027
4. Valuables+	15519	12930	21541	33873	33140	38091
5. less: Consumption of fixed capital	181421	223655	241371	262366	286266	314659
5.1 Public sector	73701	79909	82999	86017	89555	93648
5.2 Private corporate sector	46198	61609	67803	76032	86674	100549
5.3 Household sector	61522	82137	90569	100317	110037	120462
6. net capital formation (ncf)	328097	331636	391250	519217	637562	741873
6.1 Public sector	70909	54559	62579	80972	113329	133660
6.2 Private corporate sector	97277	64515	88933	192140	278180	338870
6.3 Household sector	144392	199632	218197	212232	212913	231252
6.4 valuables +	15519	12930	21541	33873	33140	38091
7. Errors & omissions	-3274	-4	33004	14059	26274	-3209
8. Net capital formation adjusted for errors and omissions	324823	331632	424254	533276	663836	738664
9. Gross capital formation adjusted for errors and omissions	506244	555287	665625	795642	950102	1053323

Source : Central Statistical Organisation

+ Excluding works of art & antiques

P-Provisional

* : Quick estimates

NATIONAL PRODUCT AND RELATED AGGREGATES

Table 2.10 - PERFORMANCE OF PUBLIC SECTOR
(at current prices)

(Rs.Ten million)

Item	1999-00	2002-03	2003-04	2004-05	2005-06(P)	2006-07*
1	2	3	4	5	6	7
1.Gross domestic product	1786525	2261415	2538171	2877706	3275670	3790063
1.1 Public	457006	576210	613897	669335	712447	812315
1.2 Private	1329519	1685205	1924274	2208371	2563223	2977748
2.Gross domestic saving	484256	647970	821027	1000424	1227348	1441423
2.1 Public	-15494	-15936	29521	68951	92263	133359
2.2 Private	499750	663906	791506	931473	1135085	1308064
3.Gross domestic capital formation unadjusted *	493999	605533	712900	954889	1195408	1442604
3.1 Public	144610	149399	174579	216962	272002	321753
3.2 Private	349389	456134	538321	737927	923406	1120851
4.Final consumption expenditure	1510285	1843596	2013844	2186542	2435298	2751116
4.1 Public	252744	290978	310297	338052	373076	427007
4.2 Private	1257541	1552618	1703547	1848490	2062222	2324109
Percentage share of public sector						
1.Gross domestic product	25.6	25.5	24.2	23.3	21.7	21.4
2.Gross domestic saving	-3.2	-2.5	3.6	6.9	7.5	9.3
3.Gross domestic capital formation(unadjusted)	29.3	24.7	24.5	22.7	22.8	22.3
4.Final consumption expenditure	16.7	15.8	15.4	15.5	15.3	15.5

Source : Central Statistical Organisation

* Excluding valuables

P-Provisional

* : Quick estimates

TABLE NUMBER 2.3
PERCENTAGE DISTRIBUTION OF NET DOMESTIC PRODUCT BY ECONOMIC ACTIVITY
 (AT CURRENT PRICES)
 2006-07

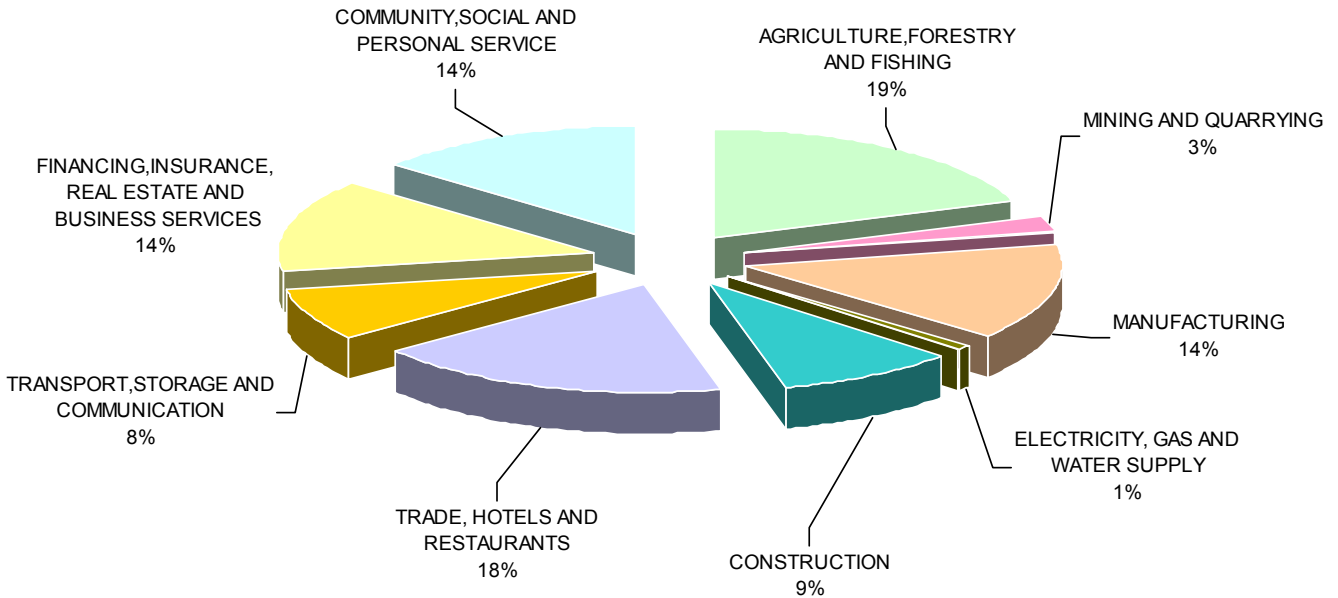


TABLE NUMBER 2.7
DOMESTIC SAVING
 (AT CURRENT PRICES)

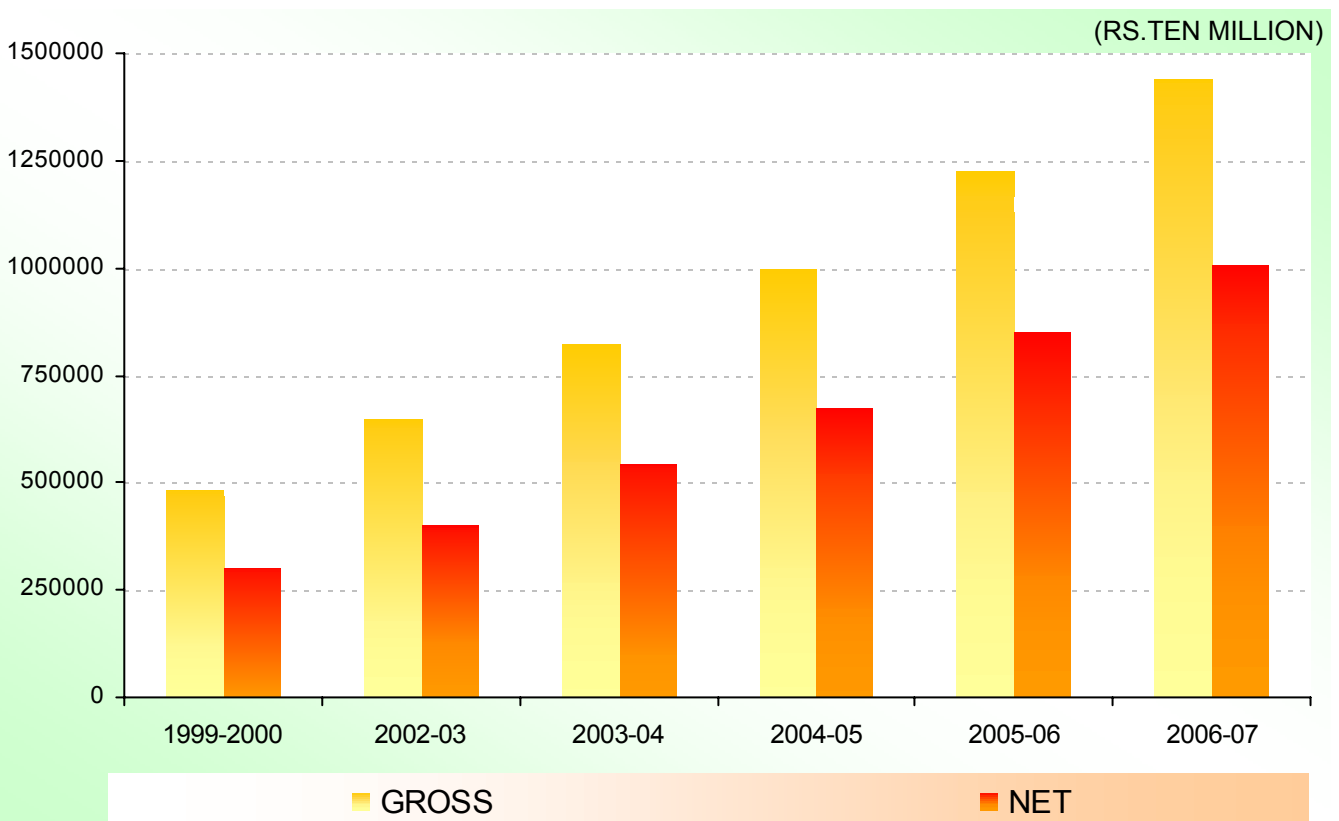


TABLE NUMBER 2.1&2.2
PER CAPITA NET NATIONAL DOMESTIC PRODUCT

(RUPEES)

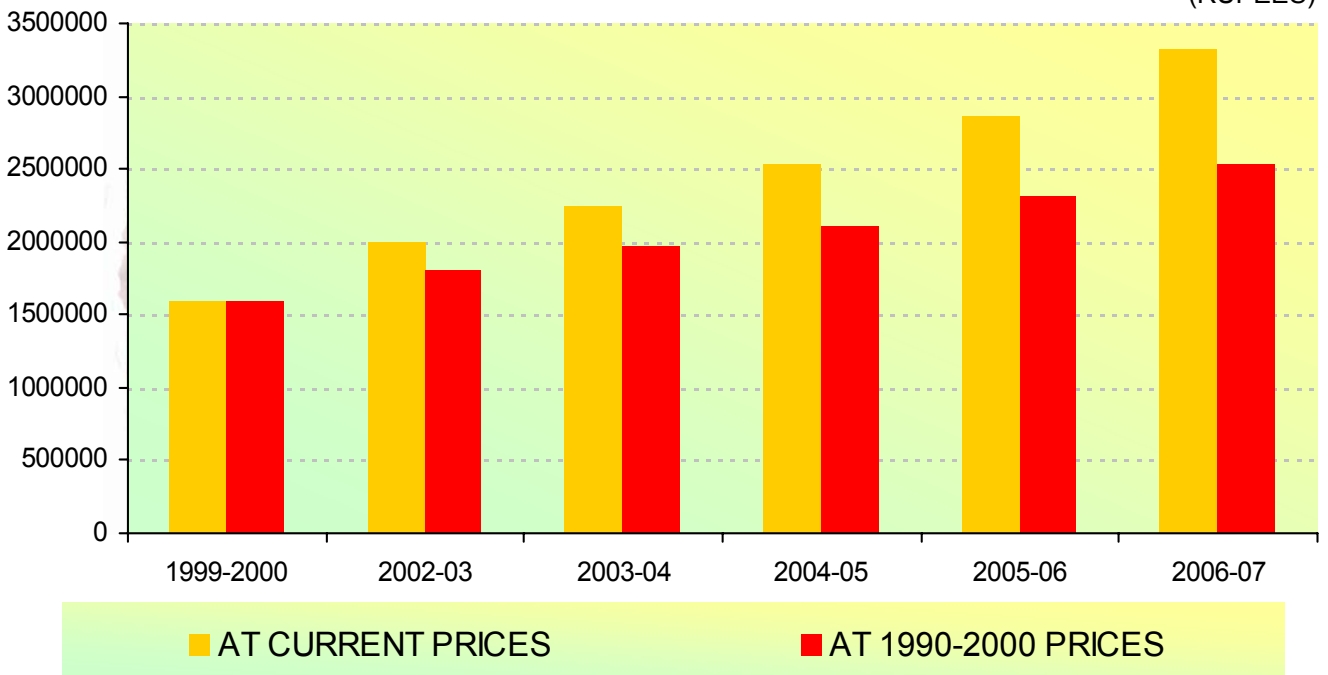


TABLE NUMBER 2.10
PERFORMANCE OF PUBLIC SECTOR
(AT CURRENT PRICES)

(RS. TEN MILLION)

